

Knuckle/Control Arms/Compliance Pivot

Illustrated Index

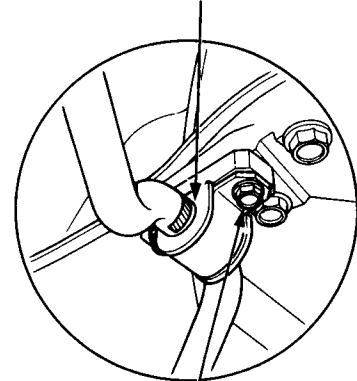
Overall Suspension

NOTE: Align the white line on the stabilizer bar with the bushing end and install the stabilizer bar.

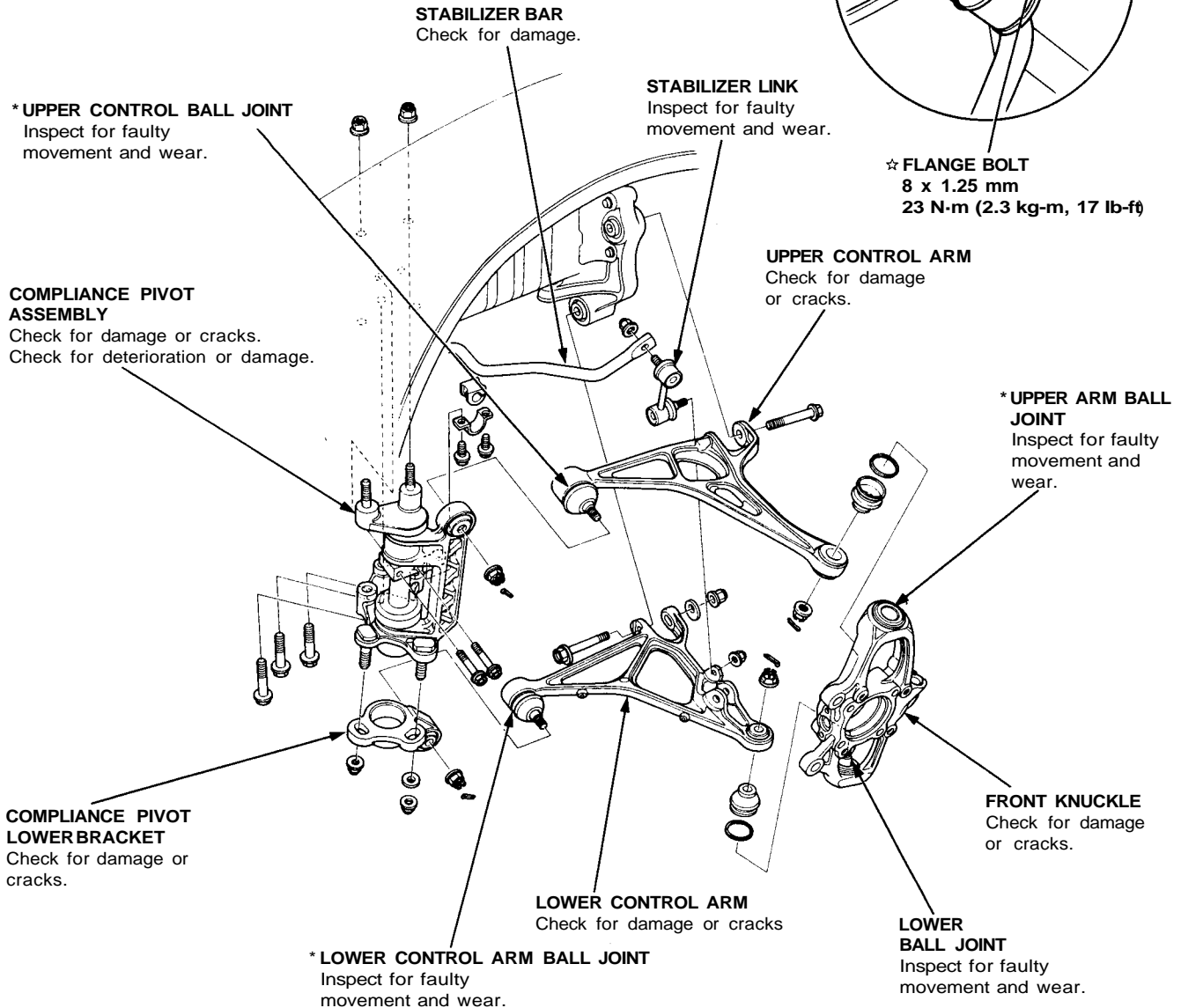
NOTE:

- Wipe off the grease before tightening the nut at the ball joint.
- Torque specifications, see page 18-14.

☆ Corrosion resistant bolt/nut



☆ FLANGE BOLT
8 x 1.25 mm
23 N·m (2.3 kg·m, 17 lb·ft)



NOTE: Replace the joint boot if any are damaged. The parts marked with an asterisk (*) have a retainer attaching the ball joints. Replace the retainer whenever the boot is replaced.

CAUTION: Do not remove the arms, knuckle, and compliance pivot by striking them with a hammer, and take care not to drop them.