

# Idle Control System

## Troubleshooting Flowchart — M/T Neutral Switch Signal

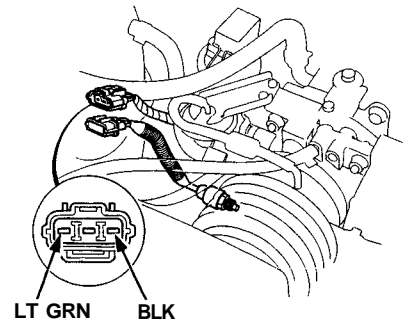
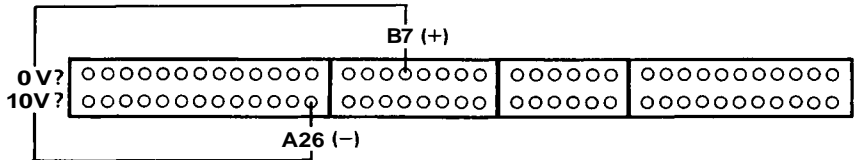
This signals the PGM-FI ECU when the transmission is in Neutral.

**Inspection of M/T neutral Switch Signal**

Connect the ECU test harness between the ECU and connector (page 11-21).

Turn the ignition switch ON.

Measure voltage between B7 (+) terminal and A26 (-) terminal in Neutral position.



Is there voltage?

**YES**  
Disconnect the 3P connector on the M/T neutral switch.

**NO**

Connect LT GRN terminal to BLK terminal.

Shift transmission in gear.

Is there voltage?

**NO**  
Replace M/T neutral switch.

**YES**

Repair open in LT GRN wire between ECU (B7) and M/T neutral pressure switch or BLK wire between M/T neutral switch and G101.

Is there approx. 10 V?

**NO**  
Disconnect "B" connector from engine wire harness only, not the ECU.

**YES**

M/T neutral switch signal is OK.

Is there approx. 10 V?

**NO**  
Substitute a known-good ECU and recheck. If prescribed voltage is now available, replace the original ECU.

**YES**

Reconnect "B" connector to main wire harness and disconnect 3P connector on the M/T neutral switch.

Is there approx. 10 V?

**NO**  
Repair short in LT GRN wire between ECU (B7) and the M/T neutral switch.

**YES**

Replace M/T neutral switch.