

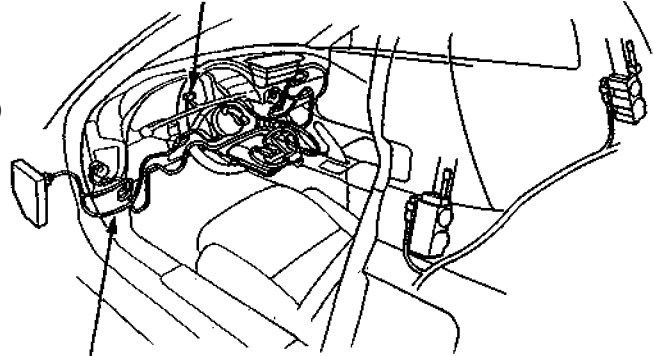
# A/T Gear Position Indicator

## Component Location Index

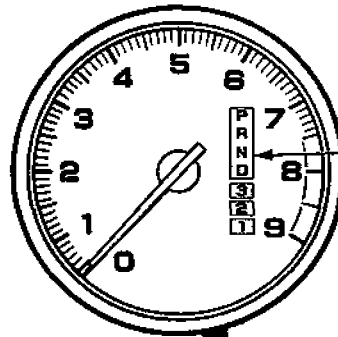
### CAUTION:

- All SRS wiring harnesses are covered with yellow outer insulation.
- Before disconnecting any part of the SRS wire harness, install the short connectors (see page 24-10 ('93-'96))
- Replace the entire affected SRS harness assembly if it has an open circuit or damaged wiring.
- After installing the gauge assembly, recheck the operation of the SRS Indicator light.

CONNECTOR "A" (Carries the SRS Indicator signal)

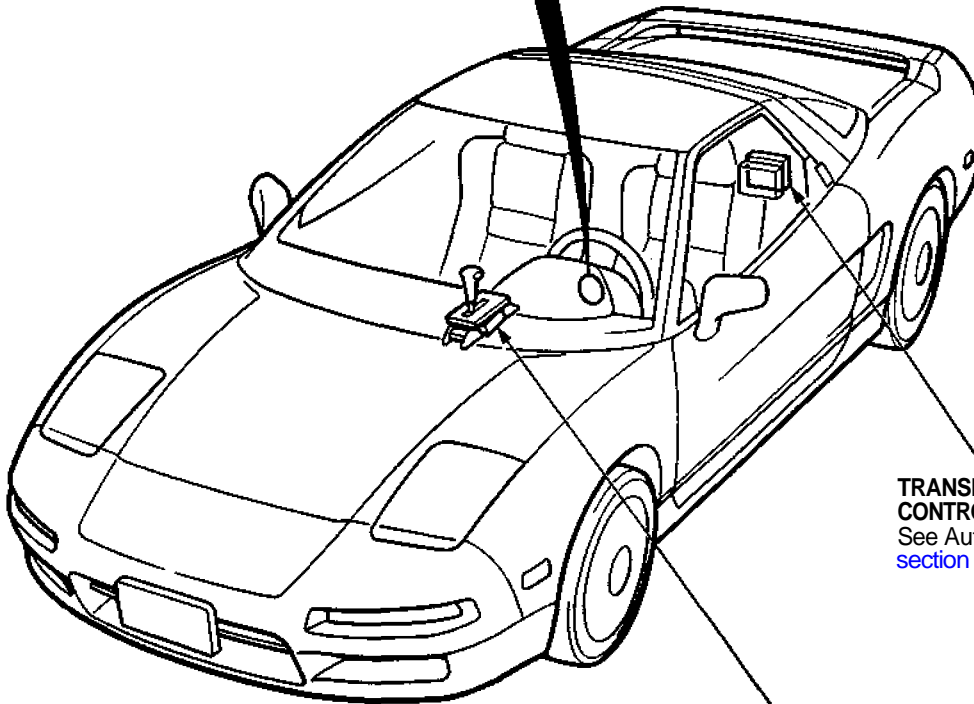


SRS MAIN HARNESS



A/T GEAR POSITION INDICATOR

Input Test, page 23-154 ('91-'93)



TRANSMISSION CONTROL MODULE (TCM)  
See Automatic transmission section 14

A/T GEAR POSITION SWITCH

Test, page 23-160  
Replacement, page 23-161