

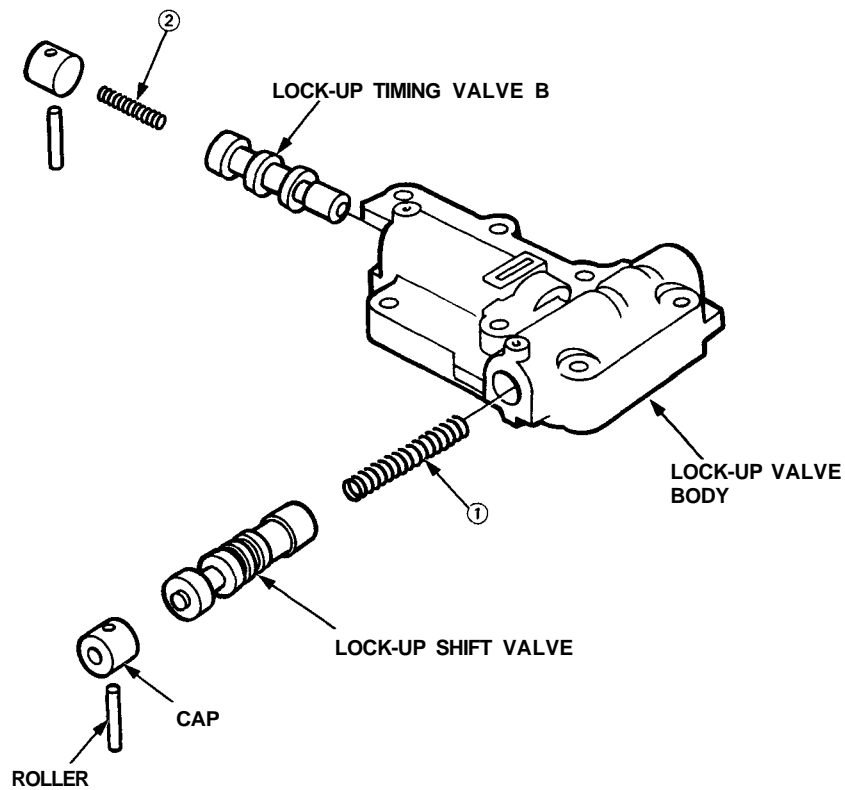


Lock-up Valve Body

Disassembly/Inspection/Reassembly

NOTE:

- Clean all parts thoroughly in solvent or carburetor cleaner, and dry with compressed air.
- Blow out all passages.
- Replace valve body as an assembly if any parts are worn or damaged.
- Check all valves for free movement. If any fail to slide freely, see Valve Body Repair on page 14-109.
- Coat all parts with ATF before reassembly.



SPRING SPECIFICATIONS

Unit of length: mm (in)

No.	Spring	Standard (New)			
		Wire Dia.	O.D.	Free Length	No. of Coils
①	Lock-up shift valve spring	1.0 (0.039)	8.6 (0.339)	51.3 (2.020)	19.8
②	Lock-up timing valve B spring	0.8 (0.031)	5.6 (0.220)	27.0 (1.063)	15.7