

Idle Control System

Troubleshooting Flowchart — Automatic Transaxle (A/T) Gear Position Signal

This signals the ECM when the transmission is in Neutral or Park.

Inspection of A/T gear position signal.

Turn the ignition switch ON.

Observe the A/T gear position indicator and select each position separately.

Does the indicator light properly?

NO
See A/T gear position switch indicator inspection (see [section 14](#)).

YES

Turn the ignition switch OFF.

Connect the test harness between the ECM and connector. Disconnect "B" connector from the engine wire harness only, not the ECM (see page [11-37](#)).

Turn the ignition switch ON.

Measure voltage between B7 (+) terminal and A26 (-) terminal.

Is there approx. 10V?

NO
Substitute a known-good ECM and recheck. If prescribed voltage is now available, replace the original ECM.

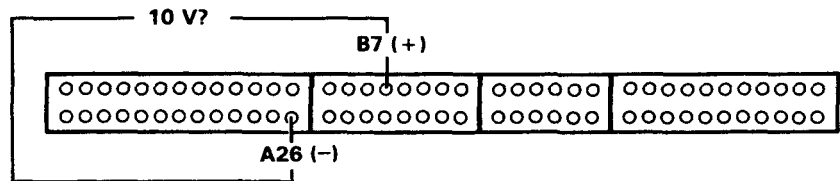
YES

Turn the ignition switch OFF.

Reconnect "B" connector to the engine wire harness.

Turn the ignition switch ON.

(To page [11-95](#))





(From page 11-94)

