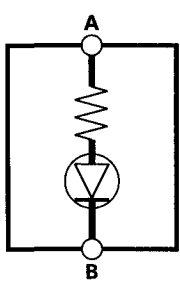
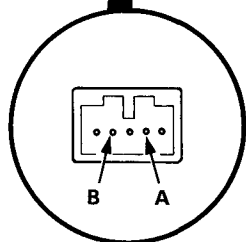
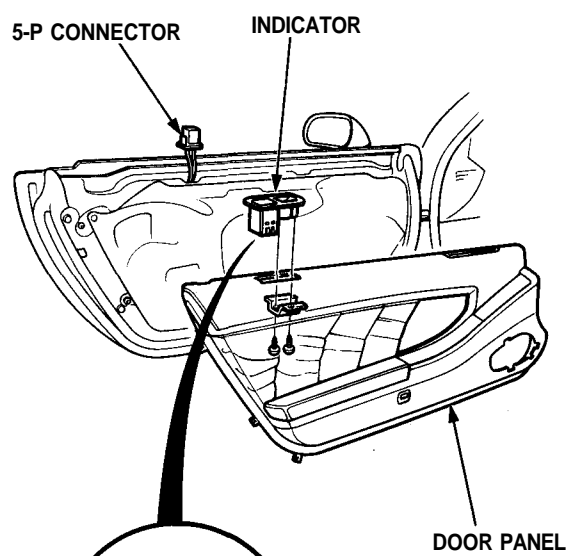


# Security Alarm System

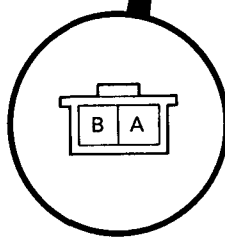
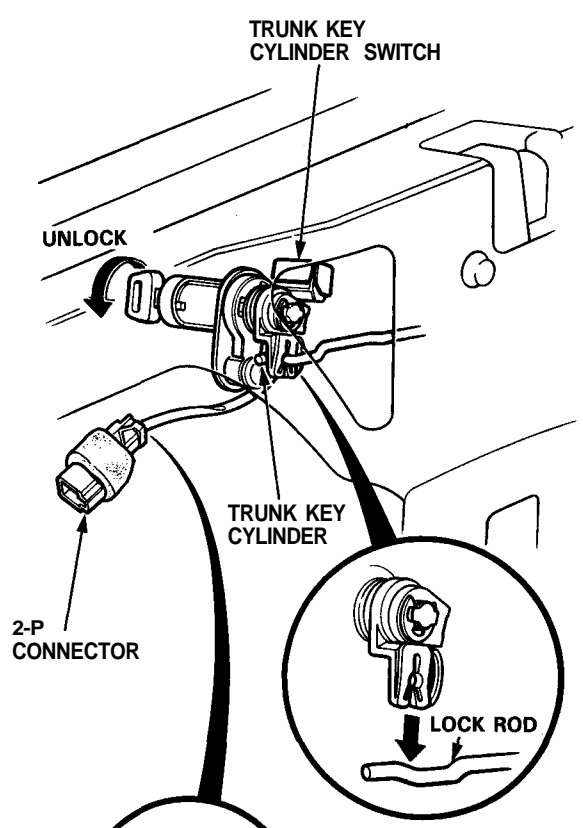
## Indicator Replacement

1. Remove the door panel (see [section 20](#)).
2. Remove the two screws from the indicator.
3. Remove the indicator from the door panel.



## Trunk Key Cylinder Switch Test

1. Open the trunk lid and remove the trunk rear panel.
  2. Disconnect the 2-P connector from the trunk key cylinder switch.
  3. Check continuity at the switch connector terminals.
- There should be continuity between the terminals when the trunk lock is turned to UNLOCK with the key.
  - There should be no continuity when the lock is released.



View from wire side