

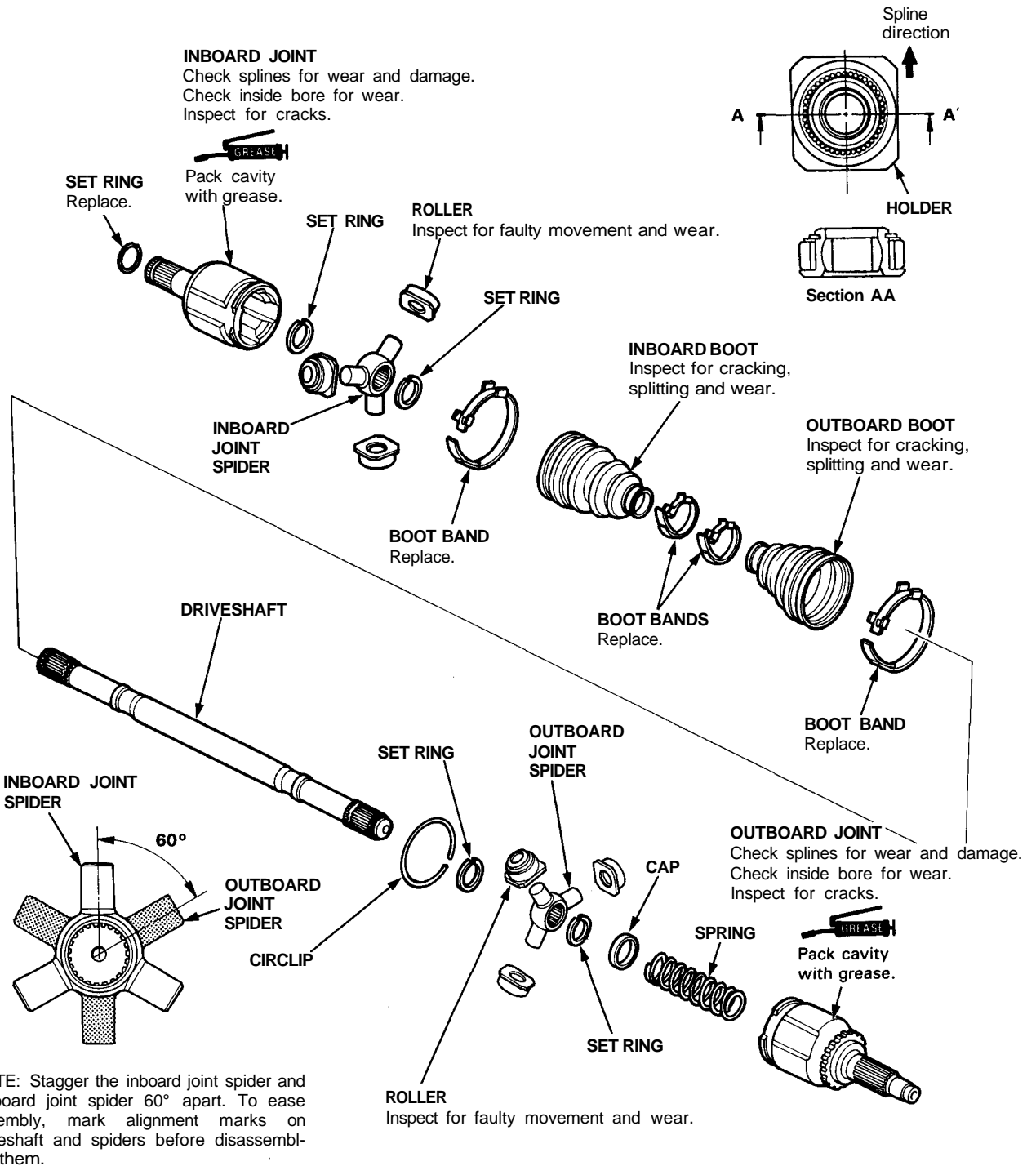
# Inspection

**GREASE** : Thoroughly pack the inboard joint and outboard joint with joint grease included in the new joint boot set.

## Grease Quantity:

Inboard Joint	120–130 g (4.2–4.6 oz)
Outboard Joint	170–180 g (6.0–6.3 oz)

NOTE: Mark the rollers and roller grooves during disassembly to ensure proper positioning during reassembly.



NOTE: Stagger the inboard joint spider and outboard joint spider 60° apart. To ease assembly, mark alignment marks on driveshaft and spiders before disassembling them.